

Alaska Department of Fish and Game

Habitat Section
Southeast Region



106-44-10010 Tributary 1

ADDITION

Water body name:

Survey date: 5/25/2023

Quad: Petersburg D-3

Species & Lifestage:

Upper Reach Latitude: 56.810644 **Longitude:** -132.945927

Survey crew: DK

Lower Reach Latitude: 56.807970 **Longitude:** -132.949013

Findings: We surveyed this uncataloged stream from the road using a backpack electrofisher and GPS and captured juvenile coho salmon and Dolly Varden. The stream is blocked by a culvert that is perched at the outlet and plugged with rocks at the inlet preventing water from flowing through. No fish were caught upstream of the pipe. Downstream has a defined channel with sand and small gravel substrate providing quality fish spawning and rearing habitat. (Table 1; Figures 1–3)

Recommendations: Add this uncataloged stream to the anadromous waters catalog up to waypoint 68 for rearing coho salmon (Figure 4).

Nomination: Pending

Table 1.–106-44-10010 Tributary 1 Addition survey data.

Waypoint	Latitude	Longitude	Notes	Stream Width ft	Stream Substrate	Habitat Features	Gradient %	Sample Effort	Sample Results
68	56.810649	-132.945947	Water appears to seep through the road, 18 inch CMP is perched several feet but dry. Habitat likely continues above but the culvert is a complete fish block.	2-4	Sand Small Gravel	Log Jams	1-2	EF	2 CO 6 DV
593	56.810986	-132.945193	24 inch CMP, little to no water running through due to rock plug at inlet. Stream is low grade with aquatic vegetation throughout. No water through the pipe, seeps from roadway. Low grade stream below.						



Figure 1.—Juvenile coho salmon caught at waypoint 68.



Figure 2.—Channel downstream of culvert outlet at waypoint 68.



Figure 3.—Perched pipe outlet at waypoint 68.

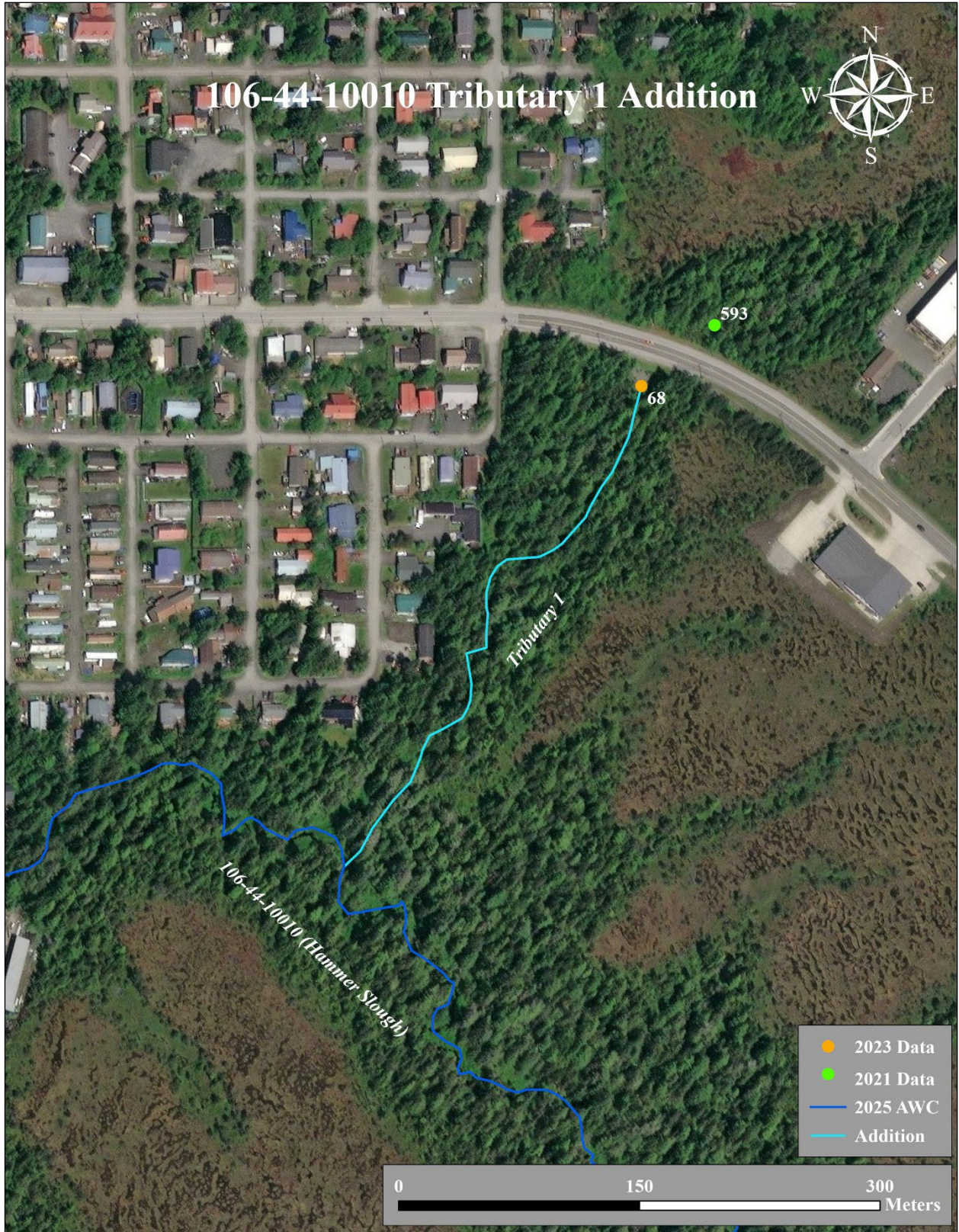


Figure 4.–106-44-10010 Tributary 1 Addition map.